



**IN-PREP**

# The ENGAGE IMS/CAD

Dr. Antonis Kostaridis  
Technical Coordinator  
Satways Ltd.

Wednesday, 28<sup>th</sup> November 2018  
1<sup>st</sup> TTX, Spoleto, Italy



# ENGAGE at a Glance

## ***System for Public Safety Organizations integrated into a single end-user application:***

- Emergency Calls Management
- Incident Management & Dispatch
- Operational Resource Management
- Rostering
- Operational Resource Tracking
- Incidents Reporting
- Incident Management with Aerial Means
- Visualization and Management of GIS data inside a 3D synthetic environment
- Reports and Statistics Export
- Users/Roles/Rights Management
- 3<sup>rd</sup> party Applications interoperability



# C2s for Planning & Rehearsing Missions – On the Move

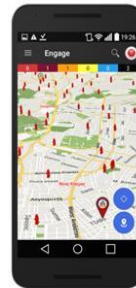
## ENGAGE Commander

- Crisis Management in the field
- Common Situational Picture
- Offline and Online use
- Collaborate
- 3D Maps



## ENGAGE Mobile

- Incident Assignment & Status
- Common Situational Awareness
- 2-way messaging

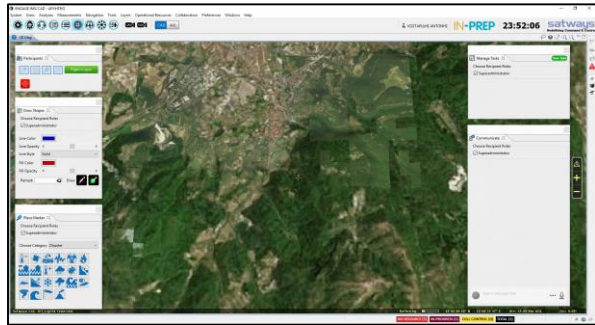


# ENGAGE IMS/CAD @TTX1

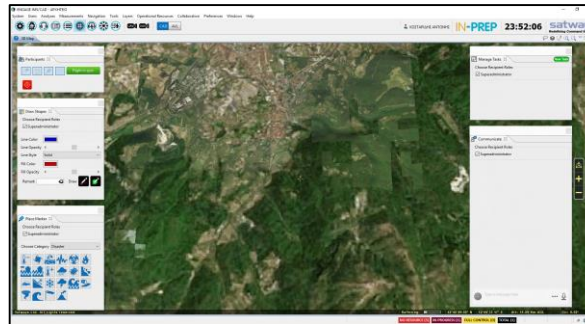
*Incident Updates, Tasking orders, communication, map markers and schematics, synchronized flights*



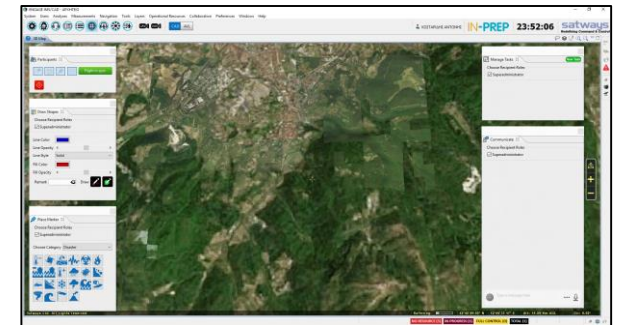
Strategic



Tactical



Operational



IN-PREP

# ENGAGE IMS/CAD @TTX1

---

- Interconnect with the Scenario Builder and Training tool (Crimson)
  - Transform Scenario Builder Events to ENGAGE Incidents
  - Assign operational resources (Tactical Role Table)
  - Manage operational resources (Operational Table)
  - Update incident information (Tactical and Operational Table)
  - Disseminate the Tactical Situational Picture with the Training tool (CRIMSON)
  - Visualize information from Sensors and Simulation Model Results
  - Collaborate via shared map-board, chat, synchronized flights and tasking

# ENGAGE IMS/CAD - Collaboration @TTX1

The screenshot displays the ENGAGE IMS/CAD - APXHFEIO software interface. The main window shows a 3D map of a landscape with a river and a large structure. Several tool panels are visible, each highlighted with an orange border:

- Participants Panel:** Includes a "Flight in sync" button and a red stop icon.
- Draw Shapes Panel:** Features options for "Choose Recipient Roles" (Superadministrator checked), "Line Color" (blue), "Line Opacity", "Line Style" (Solid), "Fill Color" (red), "Fill Opacity", and a "Remark" field with "Draw" and "Draw" icons.
- Place Marker Panel:** Includes "Choose Recipient Roles" (Superadministrator checked) and "Choose Category" (Disaster), with a grid of disaster-related icons.
- Manage Tasks Panel:** Shows "Choose Recipient Roles" (Superadministrator checked) and a task entry: "00:00 Superadministrator → Superadministrator Pending Dispatch Team:: HAZMAT team".
- Communicate Panel:** Shows "Choose Recipient Roles" (Superadministrator checked) and a message: "First TTX has been started 00:00".

The top of the interface includes a menu bar (System, Users, Analyses, Measurements, Navigation, Tools, Layers, Operational Resources, Collaboration, Preferences, Windows, Help), a toolbar with icons for UAV-1, UAV-2, CAD, and AVL, and a status bar with the user name "ΚΩΣΤΑΡΙΔΗΣ ΑΝΤΩΝΗΣ", "IN-PREP", a timer "00:00:41", and the "satways" logo with the tagline "Redefining Command & Control". The bottom status bar shows resource status: "NO RESOURCE (5) IN-PROGRESS (1) FULL CONTROL (0) TOTAL (1)".

