

Trainer Room

1 Trainer Position

Scenario Builder App

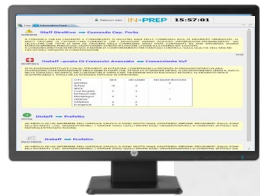
Injects Viewer App

Crimson App



Notes:

- Only the Injects viewer app connects to EMCR and depicts ALL injects
- The Crimson app depicts ALL trainee reactions
- The Crimson app needs only the Map and the Collaborative Tab as all trainee reactions will be public.

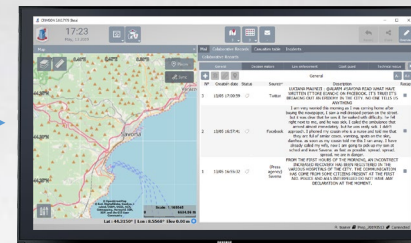


Injects Viewer App

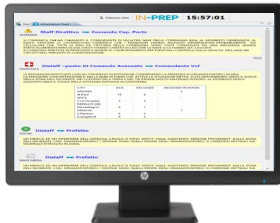
12 with one monitor

Training Room
19 Trainee Positions

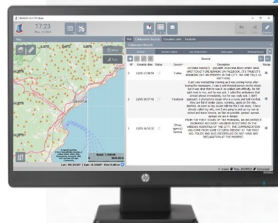
1 Global Reactions Viewer



Crimson App



Injects Viewer App



Crimson App

7 with two monitors



- Notes:**
- Only the Injects viewer connects to the EMCR and filters the injects
 - The Crimson app is used for trainee reactions.
 - The Crimson app needs only the Map and the Collaborative Tab as all reactions will be public
 - The Global reactions app (Crimson) will depict only the Collaborative Tab and Map
 - A “message” type reaction should contain the sender and recipient agency/trainee
 - A “message” type reaction could also have either sender==recipient as we want to simulate internal to the agency reactions

Observers Room
2 screens



Notes:

- The first screen will depict the Injects Viewer app without filters
- The Crimson app will depict All trainee reactions
- The Crimson app needs only the Map and the Collaborative Tab as all reactions will be public